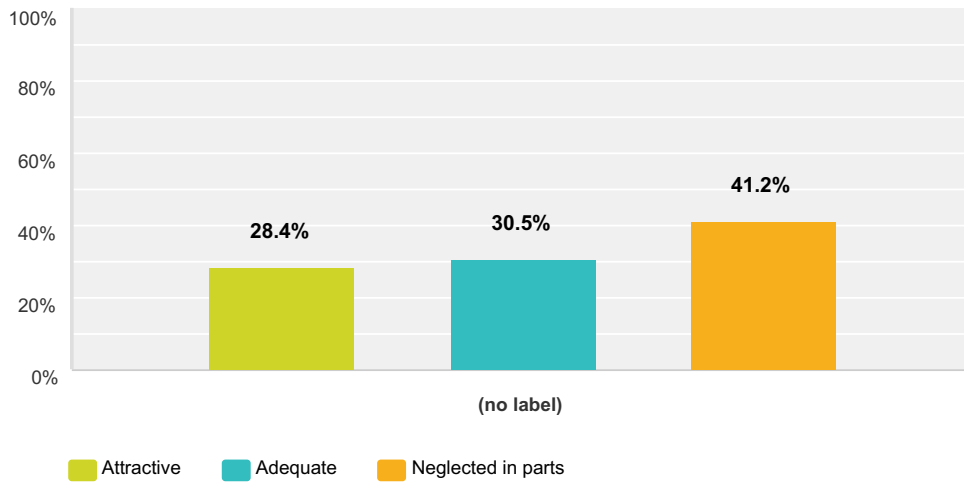


Q20 What is your opinion of the open spaces in the Marina

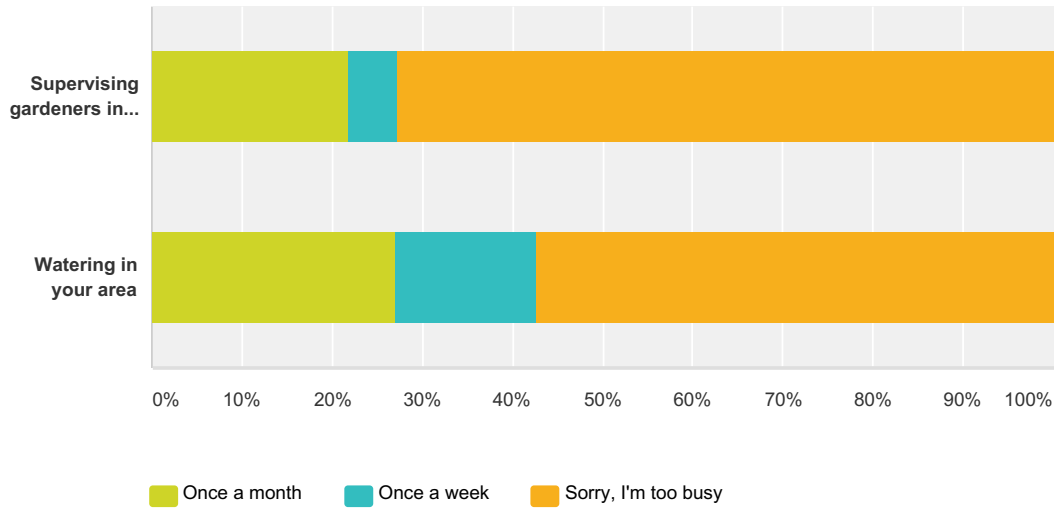
Answered: 430 Skipped: 79



	Attractive	Adequate	Neglected in parts	Total	Weighted Average
(no label)	28.4% 122	30.5% 131	41.2% 177	430	2.13

Q21 Would you volunteer to participate in caring for the public open spaces? If so, please contact the Marina office

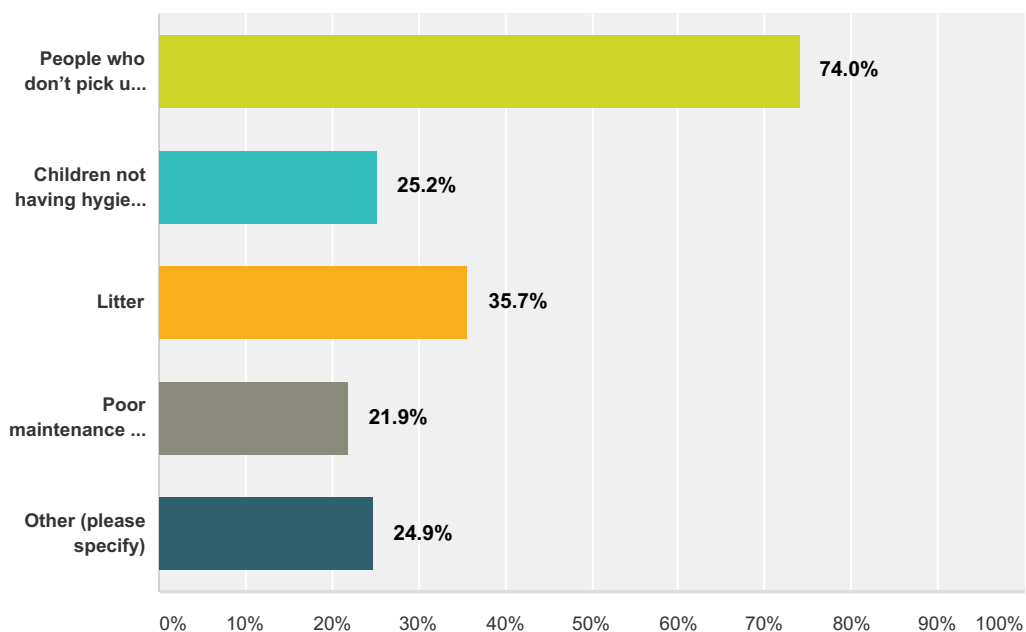
Answered: 367 Skipped: 142



	Once a month	Once a week	Sorry, I'm too busy	Total	Weighted Average
Supervising gardeners in your area	21.86% 68	5.47% 17	72.67% 226	311	1.49
Watering in your area	26.96% 86	15.67% 50	57.37% 183	319	1.70

Q22 What do you think are the problems with our open spaces and gardens (select all that apply)

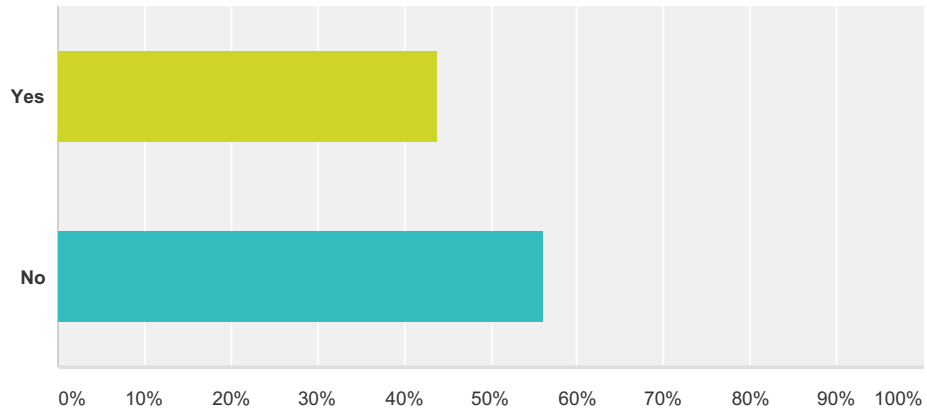
Answered: 389 Skipped: 120



Answer Choices	Responses
People who don't pick up after their dogs	74.0% 288
Children not having hygienic and clean lawns to play on	25.2% 98
Litter	35.7% 139
Poor maintenance of play equipment	21.9% 85
Other (please specify)	24.9% 97
Total Respondents: 389	

Q23 Would you like to see more play areas in the public open spaces

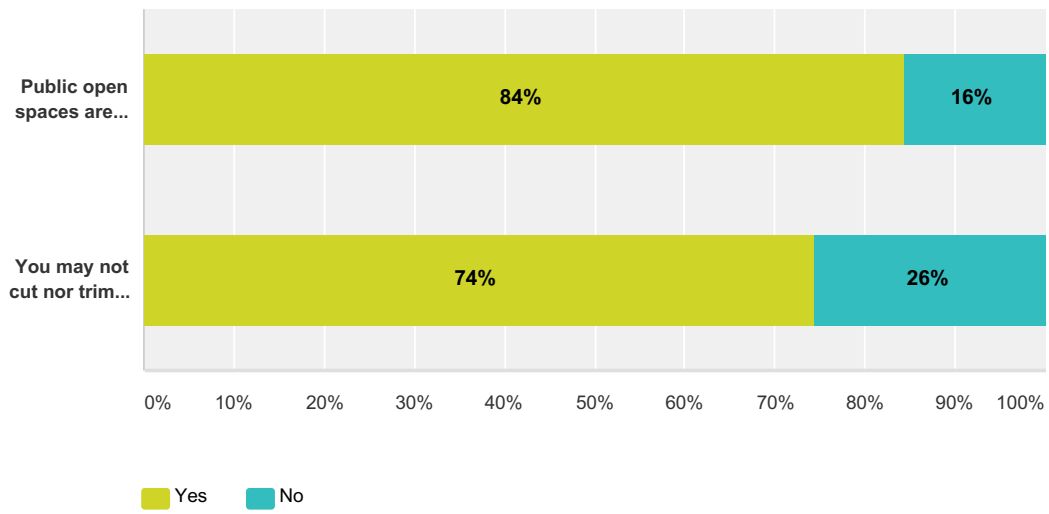
Answered: 381 Skipped: 128



Answer Choices	Responses
Yes	43.83% 167
No	56.17% 214
Total	381

Q24 Are you aware that

Answered: 434 Skipped: 75



	Yes	No	Total	Weighted Average
Public open spaces are owned by the council	84% 366	16% 68	434	1.16
You may not cut nor trim the trees without permission from CTCC (obtained via the Marina office)	74% 307	26% 106	413	1.26

Q25 Please add your comments or ideas to improve Parks and Gardens

Answered: 118 Skipped: 391